

Stay Safe with the Avanti Interlock TK10

The Avanti TK10 is a Trapped Key Interlock system for platform fence doors and service lift cabin doors in wind turbines.

What is a trapped-key interlocking system?

It is a safety system that requires transferring a key from the machine controls to a gate preventing access to the working area unless it is safe.

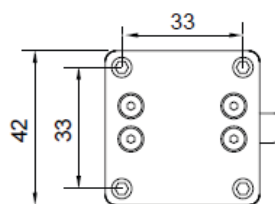
Benefits of the Avanti Interlock TK10 interlock system:

- Interlock systems provide safer access to service lifts
- Cost effective; design optimized for wind towers
- Robust key ensuring no breakages
- Optional electrical switch in the cabin to turn on/off the service lift with the same key; it can be integrated in existing control boxes
- Easy to adapt to multiple configurations of fences, compact size and solid connection to the fence
- Corrosion protection C4H
- CE Certified, compliant with ISO 14119:2013
- The Avanti Interlock system consists of a Avanti Interlock TK10-L (lock), a Avanti Interlock TK10-S (switch) and a Key.

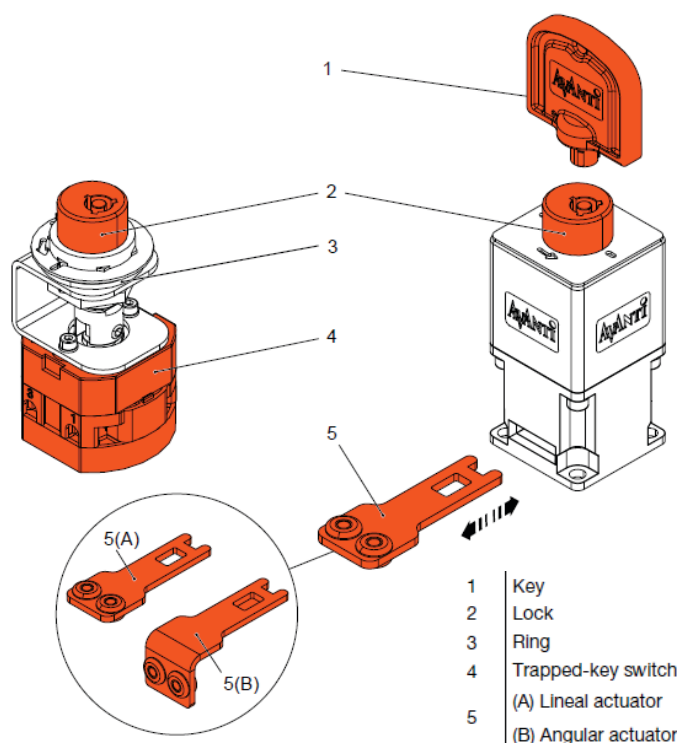
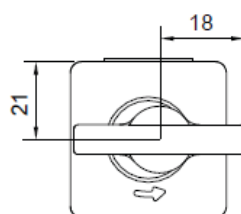
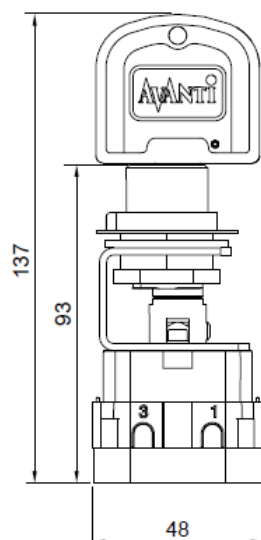
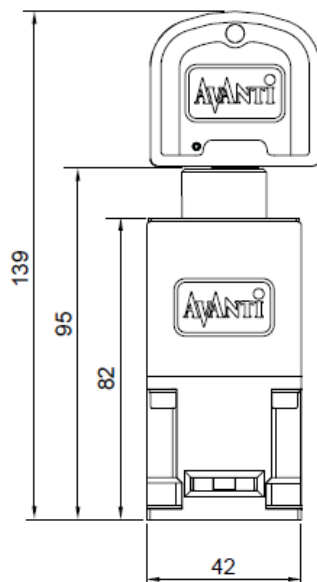
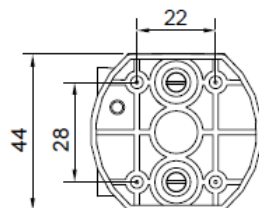


DIMENSIONS:

TK10-L



TK10-S



- 1 Key
- 2 Lock
- 3 Ring
- 4 Trapped-key switch
- 5 (A) Lineal actuator
- 5 (B) Angular actuator

SPECIFICATIONS:

Avanti Interlock TK10-L

Interlock system	Avanti Interlock TK10-L
Weight	0.63 kg
Dimensions	42 x 42 x 95 mm
Base material	Aluminium and Stainless Steel alloys
Operating temperature	-30°C / +60°C
Relative humidity	95%
Mission time	25 years
Mechanical service life	200.000 cycles
F _{zh} (TK10-L)	1.000 N
MTTF _d	150 years

Avanti Interlock TK10-S

Interlock system	Avanti Interlock TK10-S	
Weight	0.44 kg	
Dimensions	48 x 44 x 90 mm	
Base material	Aluminium and Stainless Steel alloys	
Installation diameter	23 mm	
Operating temperature	-30°C / +60°C ¹⁾	
Relative humidity	95%	
Mission time	25 years	
Mechanical service life (lock)	200.000 cycles	
Mechanical service life (switch)	1.000.000 cycles	
IP protection level	Min. IP65 (if incased on a control box ²⁾)	
	IP20 (terminals)	
Utilization category	AC21A / AC22A / AC23A / AC3 / DC21A / DC22A	
Rated operational current / voltage	AC21A AC22A	12 A / 690 V (50/60 Hz)
	AC23A	12 A / 110 V (50/60 Hz)
		12 A / 230 V (50/60 Hz)
	AC3	10 A / 110 V (50/60 Hz) (1 ph)
		10 A / 230 V (50/60 Hz) (1 ph)
		8 A / 400 V (50/60 Hz) (3 ph)
6 A / 690 V (50/60 Hz) (3 ph)		
DC21A	10 A / 50 V	
DC22A	8 A / 30 V	
B10 _d (switch)	1.000.000 cycles	
MTTF _d	Application-dependant	

To see more Avanti Products
or to contact us please visit...



www.avanti-online.com